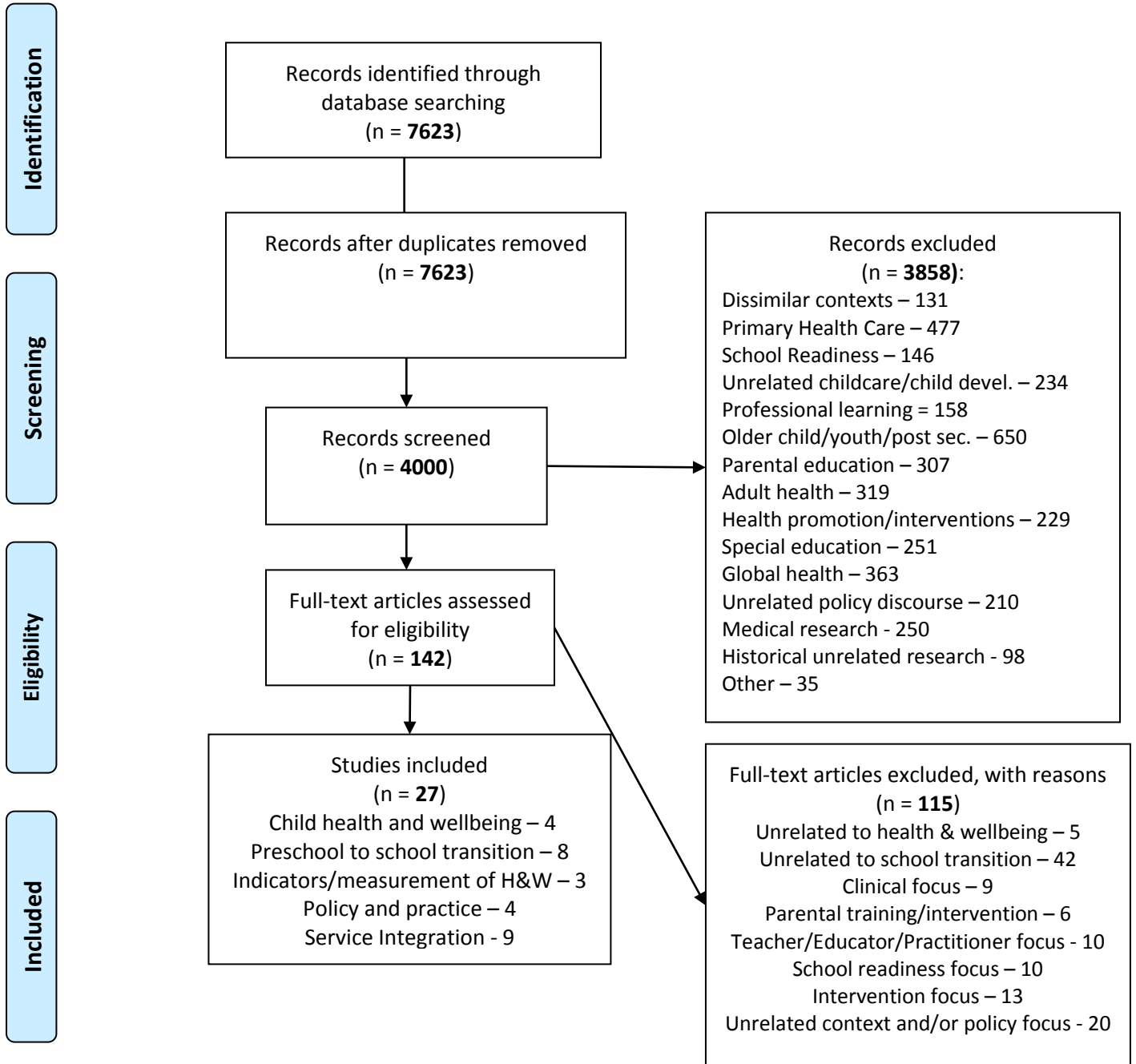


## PRISMA Flow Diagram – PROQUEST (initial search)

**Keywords** - ('early childhood') AND education AND (health OR well-being) AND ('transition to school') AND (childcare OR 'integrated centres')

**Narrowed by**, peer reviewed, publication date range of 1998-2014



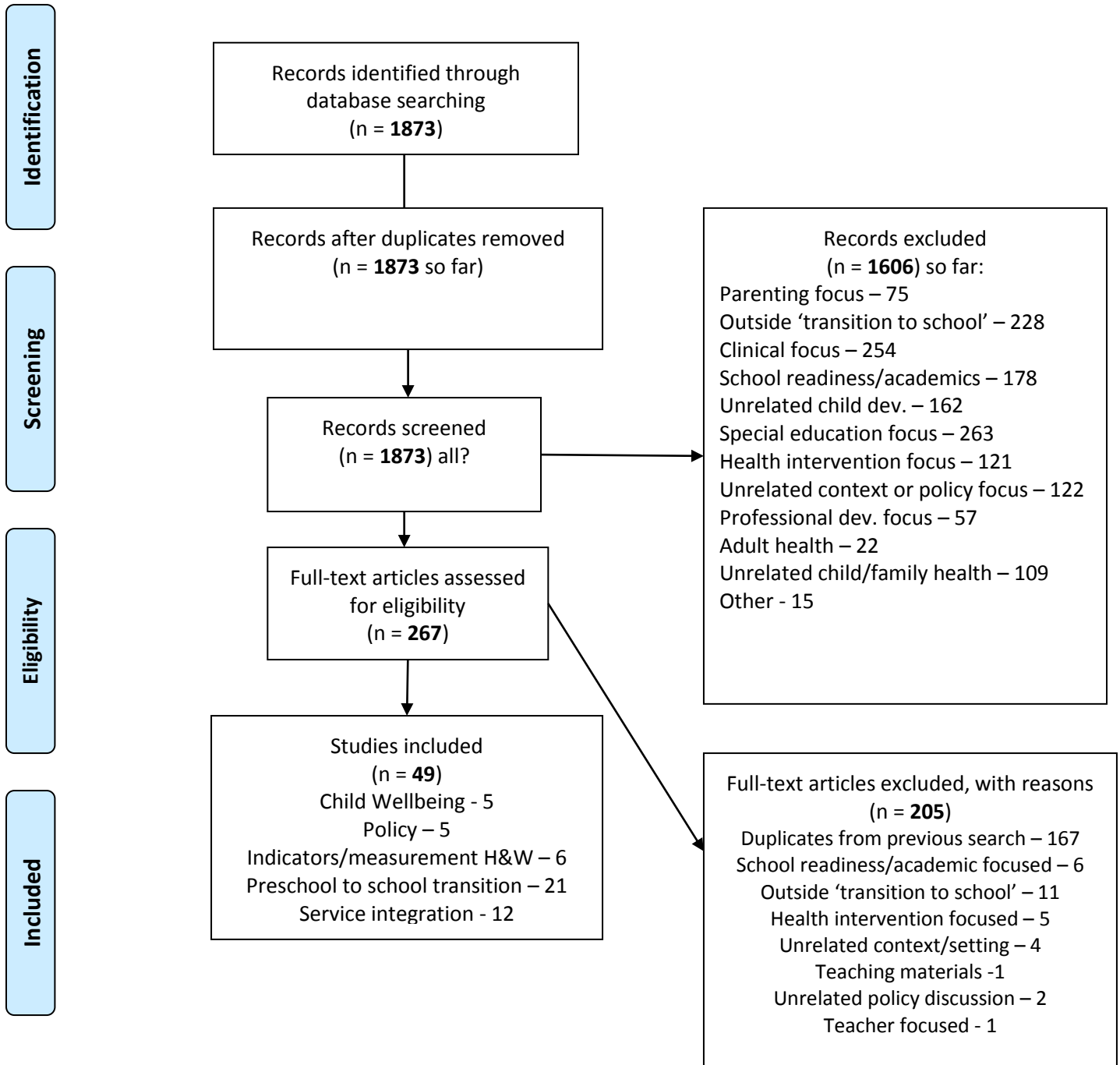
From: Moher D, Liberati A, Tetzlaff J, Altman DG, The PRISMA Group (2009). Preferred Reporting Items for Systematic Reviews and Meta-Analyses: The PRISMA Statement. PLoS Med 6(6): e1000097. doi:10.1371/journal.pmed1000097

For more information, visit [www.prisma-statement.org](http://www.prisma-statement.org).

## PRISMA Flow Diagram – PROQUEST (secondary search)

**Keywords** - (('preschool to kindergarten transition') AND (health OR well-being))

**Narrowed by**, peer reviewed, after 1998



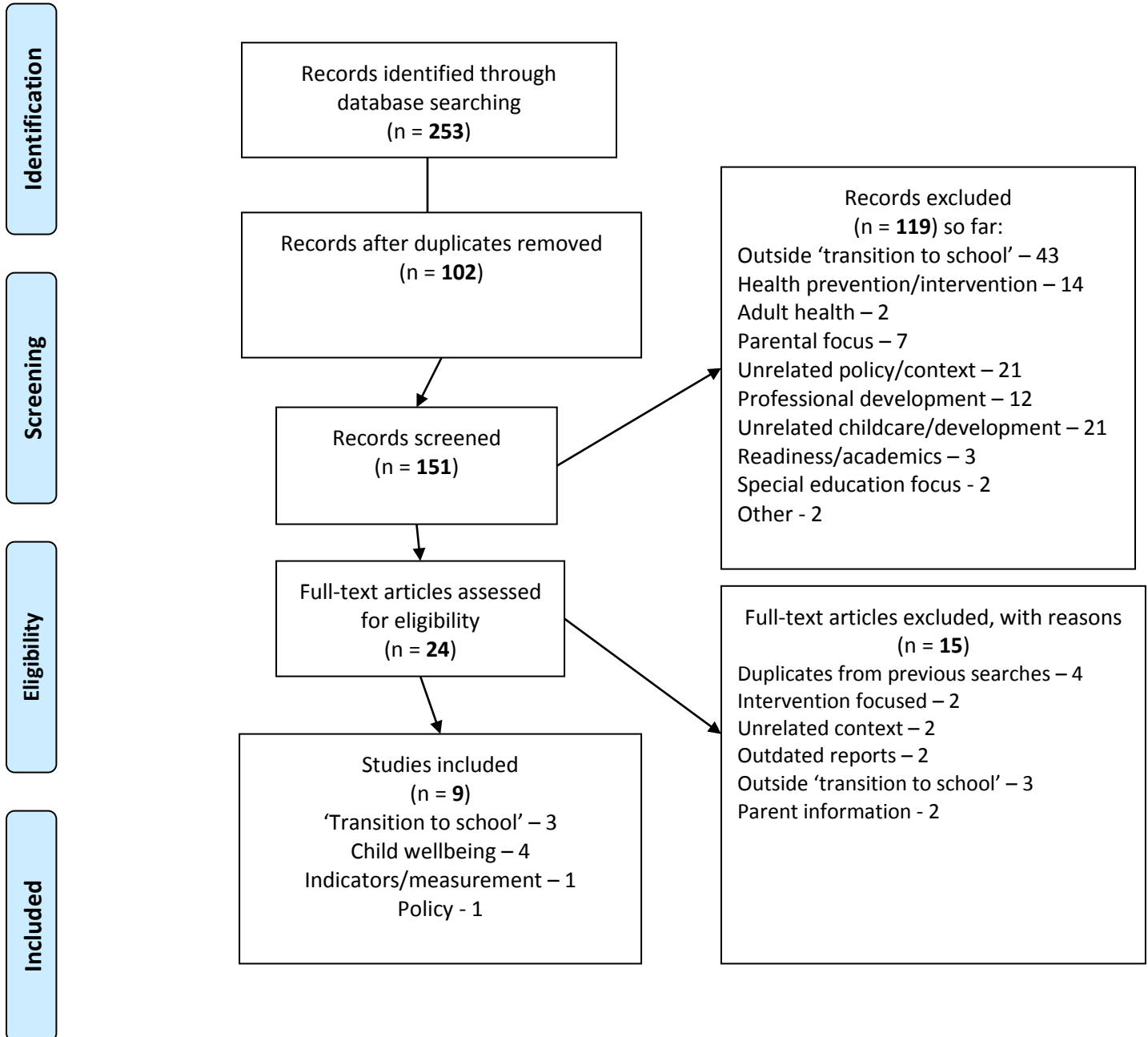
From: Moher D, Liberati A, Tetzlaff J, Altman DG, The PRISMA Group (2009). Preferred Reporting Items for Systematic Reviews and Meta-Analyses: The PRISMA Statement. PLoS Med 6(6): e1000097. doi:10.1371/journal.pmed1000097

For more information, visit [www.prisma-statement.org](http://www.prisma-statement.org).

## PRISMA Flow Diagram – INFORMIT (initial search)

**Keywords** - ("transition to school") AND health OR wellbeing AND ("early childhood education")

**Narrowed by**, peer reviewed, date range 1998-2015



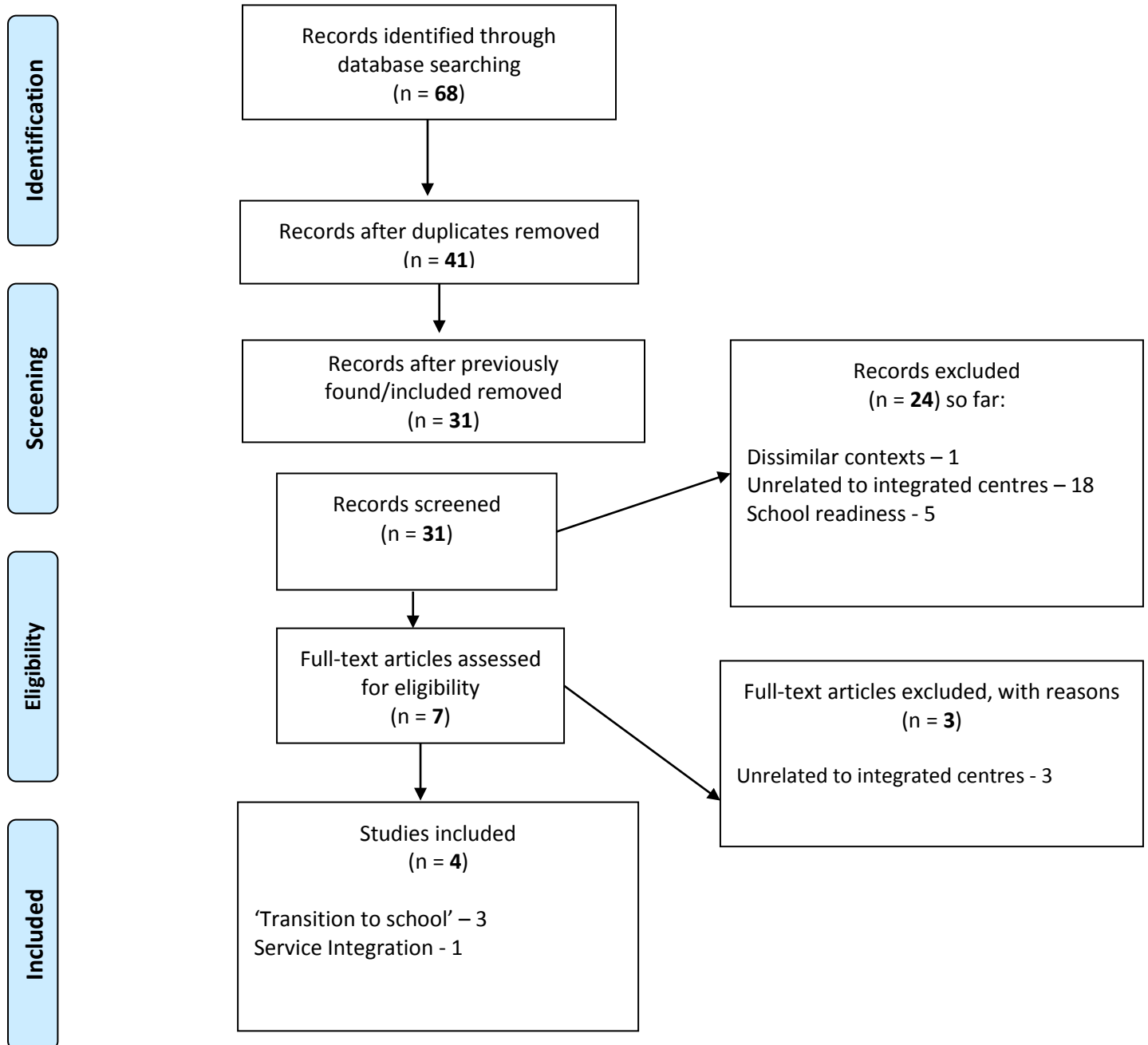
From: Moher D, Liberati A, Tetzlaff J, Altman DG, The PRISMA Group (2009). Preferred Reporting Items for Systematic Reviews and Meta-Analyses: The PRISMA Statement. PLoS Med 6(6): e1000097. doi:10.1371/journal.pmed1000097

For more information, visit [www.prisma-statement.org](http://www.prisma-statement.org).

## PRISMA Flow Diagram – INFORMIT (secondary search)

**Keywords** - ('integrated early childhood') AND ('child\* centre') AND ('transition to school') OR ('early childhood') AND Australia)

**Narrowed by**, peer reviewed, date range 1998-2015



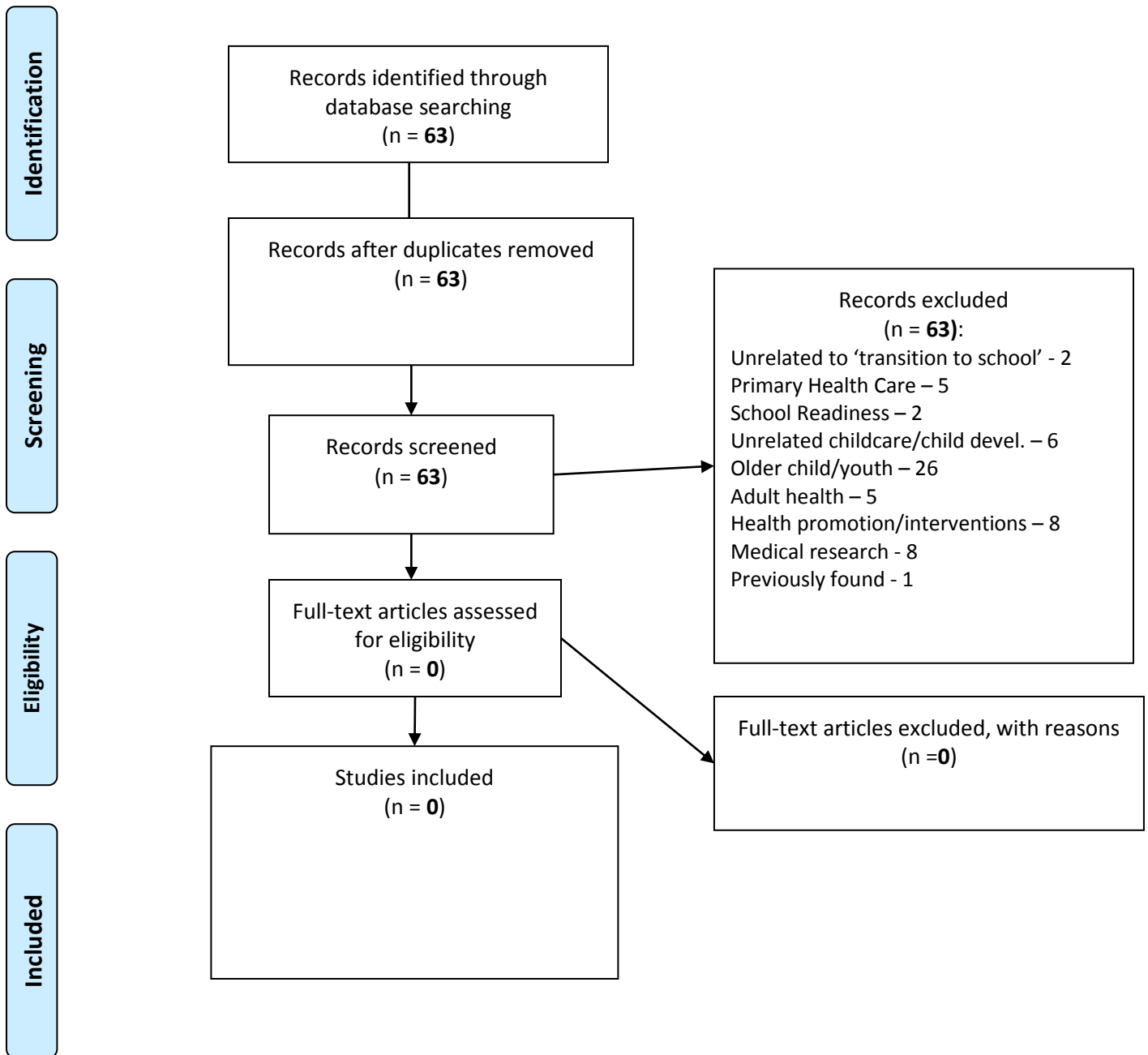
From: Moher D, Liberati A, Tetzlaff J, Altman DG, The PRISMA Group (2009). Preferred Reporting Items for Systematic Reviews and Meta-Analyses: The PRISMA Statement. PLoS Med 6(6): e1000097. doi:10.1371/journal.pmed1000097

For more information, visit [www.prisma-statement.org](http://www.prisma-statement.org).

## PRISMA Flow Diagram – WEB OF SCIENCE (includes Social Science Citation Index)

**Keywords** - ('transition to school') AND TOPIC: ('early childhood') AND TOPIC: (health)

**Narrowed by**, peer reviewed, publication date range of 1998-2014



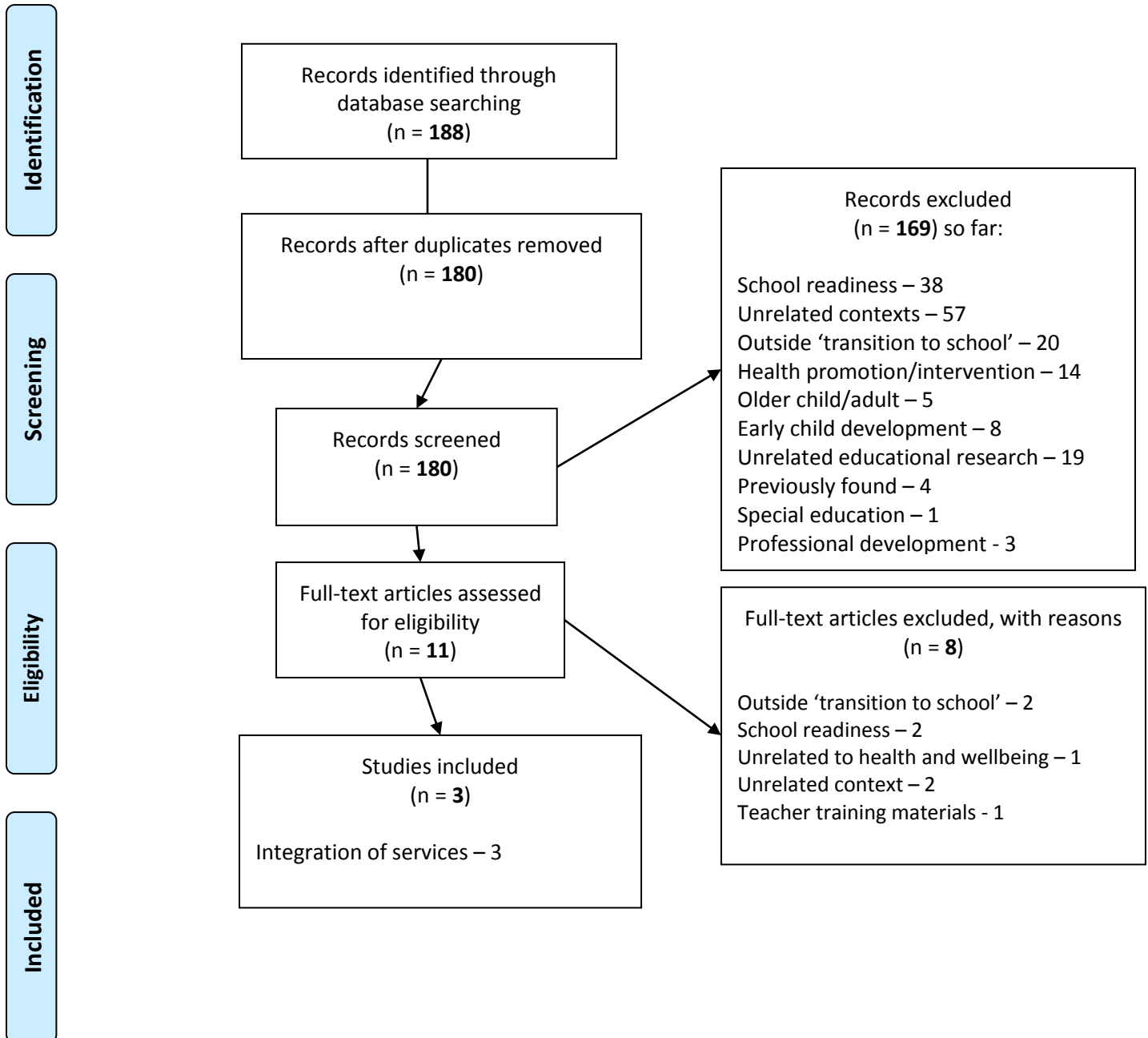
From: Moher D, Liberati A, Tetzlaff J, Altman DG, The PRISMA Group (2009). Preferred Reporting Items for Systematic Reviews and Meta-Analyses: The PRISMA Statement. PLoS Med 6(6): e1000097. doi:10.1371/journal.pmed1000097

For more information, visit [www.prisma-statement.org](http://www.prisma-statement.org).

## PRISMA 2009 Flow Diagram – ERIC

**Keywords - (kindergarten and health and early childhood)**

**Narrowed by, peer reviewed, date range 1998-2015**



From: Moher D, Liberati A, Tetzlaff J, Altman DG, The PRISMA Group (2009). Preferred Reporting Items for Systematic Reviews and Meta-Analyses: The PRISMA Statement. PLoS Med 6(6): e1000097. doi:10.1371/journal.pmed1000097

For more information, visit [www.prisma-statement.org](http://www.prisma-statement.org).